

Please read and save this Repair Parts Manual. Read this manual and the General Operating Instructions carefully before attempting to assemble, install, operate or maintain the product described. Protect yourself and others by observing all safety information. The Safety Instructions are contained in the General Operating Instructions. Failure to comply with the safety instructions accompanying this product could result in personal injury and/or property damage! Retain instructions for future reference. AMT reserves the right to discontinue or change specifications without incurring any obligations.

©2006 American Machine & Tool Co., Inc. of PA, A Subsidiary of The Gorman-Rupp Company, All Rights Reserved.

▲ WARNING Periodic maintenance and inspection is required on all pumps to insure proper operation. Unit must be clear of debris and sediment. Inspect for leaks and loose bolts. Failure to do so voids warranty.

Self-Priming Centrifugal w/Strainer

Refer to form 1808-634-00 for General Operating and Safety Instructions.

Description

These pumps are self-priming centrifugal units designed for swimming pool service or other applications needing a built-in suction strainer. Pumps are equipped with capacitor-start motor with automatic reset thermal protection and feature an oversized air space between motor and pump to eliminate hot or cold condensation problems. Handle liquids from 40° to 180° F (4° to 82° C).
NOTE: Suction pressure count not to exceed 5 PSI.

Maintenance

▲ WARNING Make certain that the power source is disconnected before attempting to service or disassembly any components! If the power disconnect is out-of sight, lock it in the open position and tag to prevent application of power.

MECHANICAL SEAL REPLACEMENT

Replace mechanical seal using Figures 2 and 3 for reference.

▲ CAUTION *The precision lapped faces on the mechanical seal are easily damaged. Handle your replacement seal carefully and read these instructions before attempting to replace the seal.*

1. Disassemble the adapter (Ref. No. 3) from the casing (Ref. No. 15) by removing the four hex head cap screws (Ref. No. 17).

NOTE: It is not necessary to remove piping from pump casing. The motor and impeller assembly are removed from the back of casing.

2. Unscrew the impeller (Ref. No. 10) by turning counterclockwise, facing impeller.

NOTE: A screwdriver slot or two flats for

use with an air open end 7/16" wrench are provided at the rear of the motor shaft (pry off bearing cap for access). To hold the motor shaft from turning, either insert a larger screwdriver blade into the slot, or use a 7/16" wrench across the flats.

3. Remove the four 3/8" hex head cap screws (Ref. No. 5) holding the adapter (Ref. No. 3) to motor (Ref. No. 1). Pull the adapter away from the motor, pulling the seal head (Ref. No. 8) off the motor shaft.
4. Push the seal seat (Ref. No. 7) from the adapter recess with a screwdriver, pushing from motor side of adapter.
5. Thoroughly clean all surfaces of the seal cavity.
6. Carefully wipe the ceramic surface of the new seal seat with a clean cloth.
7. Wet the rubber portion of the seal seat with a light coating of soapy water.
8. Press the new seal seat squarely into the cavity in the adapter. If the seal seat does not press squarely into the cavity, it can be adjusted in place by pushing on it with a piece of pipe. Always use a piece of cardboard between the pipe and the seal to avoid scratching the seal.
9. After the seal seat is in place, insure that it is clean and has not been marred.
10. Using a clean cloth, wipe the shaft and make certain it is perfectly clean.
11. Secure the adapter on the motor mounting face. Reuse any shims or spacers which may have been removed. Carefully guide motor shaft through the seal seat.
12. Apply a light coating of soapy water to the inside rubber portion of seal head and slide onto the motor shaft (with the sealing face first) so that

the rubber portion is just up over the shaft shoulder.

13. Replace any shim washers which may have been removed in disassembly (See Shim Adjustment).
14. Screw the impeller back in place tightening until it is against the shaft shoulder.
15. Remount the casing on the adapter.

IMPORTANT: Always inspect O-ring (Ref. No. 6). Replace when cracked or worn. Wet O-ring with oil or Vaseline for ease of assembly.

SHIM ADJUSTMENT

When installing a replacement impeller (Ref. No. 10) or motor, it may be necessary to adjust the number of shims (Ref. No. 9) to ensure proper running clearance between the impeller and the casing.

NOTE: A proper running clearance is less than 0.010". For impeller replacement, add one shim in addition to the one removed originally. For motor replacement, add two shims in addition to the shims removed during disassembly.

IMPORTANT: Insure that the casing is snugly in place and check the shaft to make sure it is turning freely, (use the screwdriver slots in the motor to turn the shaft). If it turns freely, check to ensure that the adapter and casing are fitted metal to metal where they meet on the outside. If they are not metal to metal, tighten the fasteners (Ref. No. 17) and recheck the shaft for free turning. Tighten carefully, turning the shaft while tightening so that the motor bearings are not damaged in the event that too many shims were installed. If the shaft seizes before fasteners are completely tight, disassemble pump and remove one shim. Repeat reassembly.

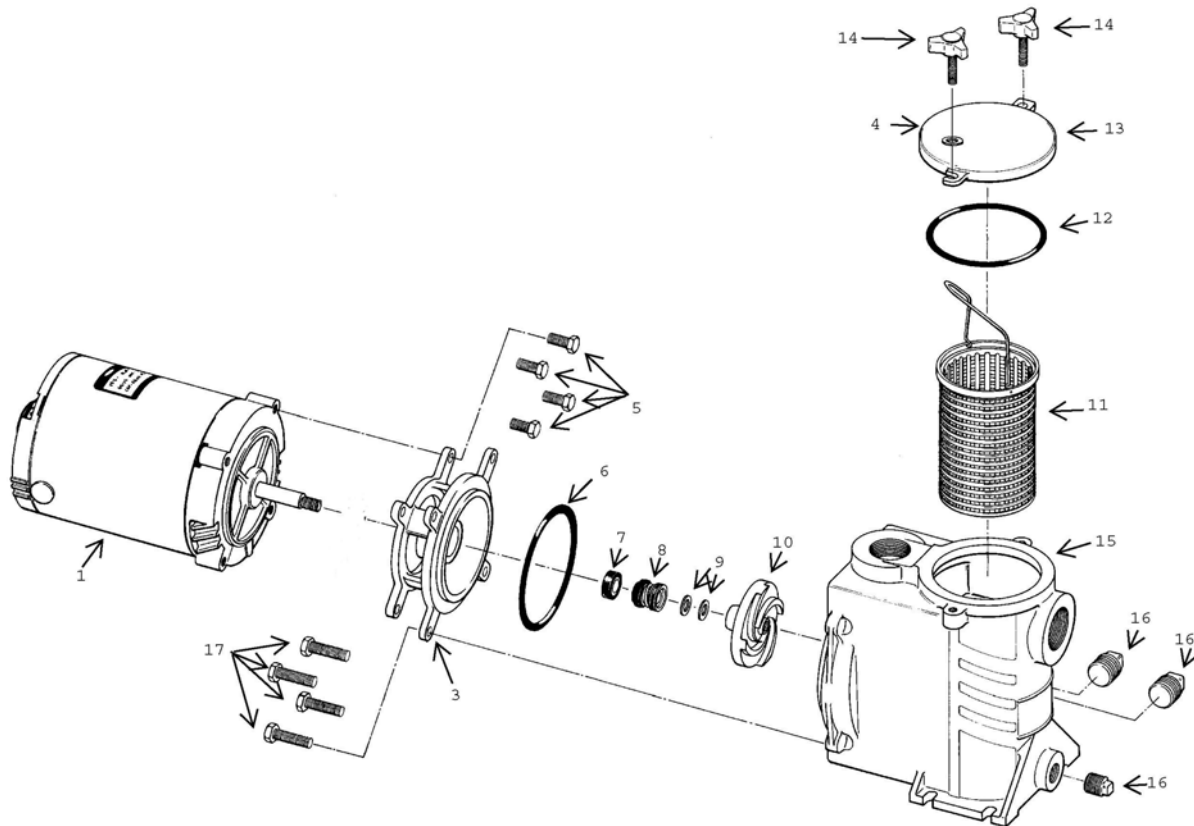


Figure 3 - Repair Parts Illustration

Repair Parts List

REF NO.	DESCRIPTION	Part Number for Models			QTY.
		2950-95	2951-95	2952-95	
1	Motor	1626-009-00	1626-010-00	1626-011-00	1
3	Adapter Kit (Includes 3 & 5)	2950-030-95	2950-030-95	2950-030-95	1
4	3/8" SAE Flat Washer	*	*	*	2
5	3/8-16" Bolt	*	*	*	4
6	O-Ring	See 7	See 7	See 7	1
7 & 8	O-Ring Kit (Includes 2,6,7,8,12)	2950-300-91	2950-300-91	2950-300-91	1
9	Impeller Shim Kit	1657-000-90	1657-000-90	1657-000-90	1
10	Impeller Kit (Includes 9 & 10)	2950-010-95	2850-013-95	2850-014-95	1
11	Suction Strainer and Handle	18568-001-90	1568-001-90	1568-001-90	1
12	O-Ring	See 7	See 7	See 7	1
13	Strainer Cover Kit (Includes 4,13,14)	2950-040-95	2950-040-95	2950-040-95	1
14	Lock Knob Assembly	1583-000-00	1583-000-00	1583-000-00	2
15	Casing Assembly (Includes 15,1617)	2950-002-95	2950-002-95	2950-002-95	1
16	3/4" NPT Pipe Plug	*	*	*	3
17	3/8-16 Bolt	*	*	*	4

*Standard Hardware Item Available Locally