

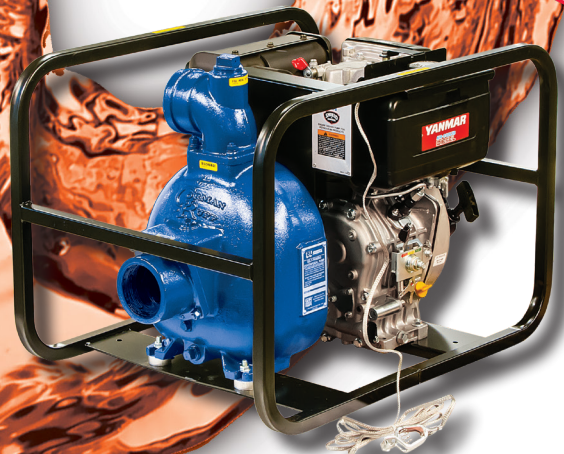


Self-Priming Engine Driven Flammable Liquid Handling Pumps

- **Cast Aluminum Construction**
- **2" and 3" NPT Models Available and capable of delivering up to 395 GPM and up to 140' TDH**
- **Applicable for Petroleum, Industrial and Agricultural needs**
- **82D1 Models: Viton®/Silicon Carbide Seals 82E1/83A1 Models: Viton®/Carbon Ceramic Seals**
- **Self-Priming up to 25 ft.**
- **Available with 3HP to 9HP with Briggs & Stratton Gasoline Engine or Yanmar Diesel Engines**
- **Model 82D1-XR550-X is UL Listed and includes a Shielded Spark Plug**
- **Heavy Duty Steel Roll Frame w/ Wheel Kit Option Available**

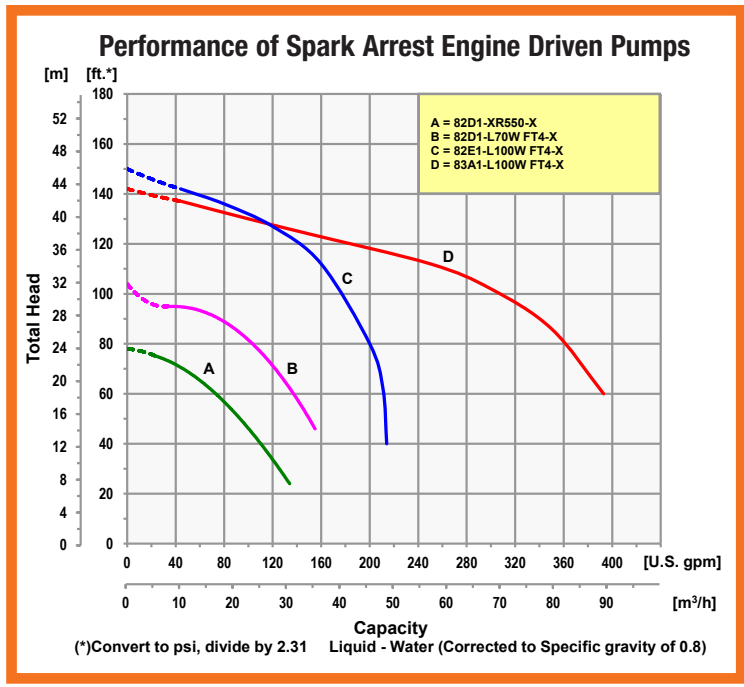


82D1-XR550-X



82E1-L100W FT4-X

The Gorman-Rupp line of Shield-A-Spark Engine-Driven Flammable Liquid Pumps are the safest way to handle hazardous pumping operations. That's why Shield-A-Spark pumps by Gorman-Rupp feature a spark and splash shielded engine, muffler and fuel cap. The gasoline engine unit features a dependable, rugged military or aircraft type spark plug which is radio suppressed and prevents spark gap jumping. A shielded ignition wire provides an enclosed path for high tension spark. The sealed toggle ignition switch is safe and spark-free and the spark-arresting muffler is designed to retard both sparks and flames. Gasoline and diesel models are available that include noncombustible air filters and long-life valves. All units are furnished with a heavy-duty steel roll cage, suction strainers and 90° discharge elbows.



400 Spring Street • Royersford, PA 19468 USA

www.amtpump.com • 888-amt-pump (268-7867)

For use with nonflammable liquids compatible with pump component materials. Viton® and Teflon® are registered trademarks of E. I. DuPont.

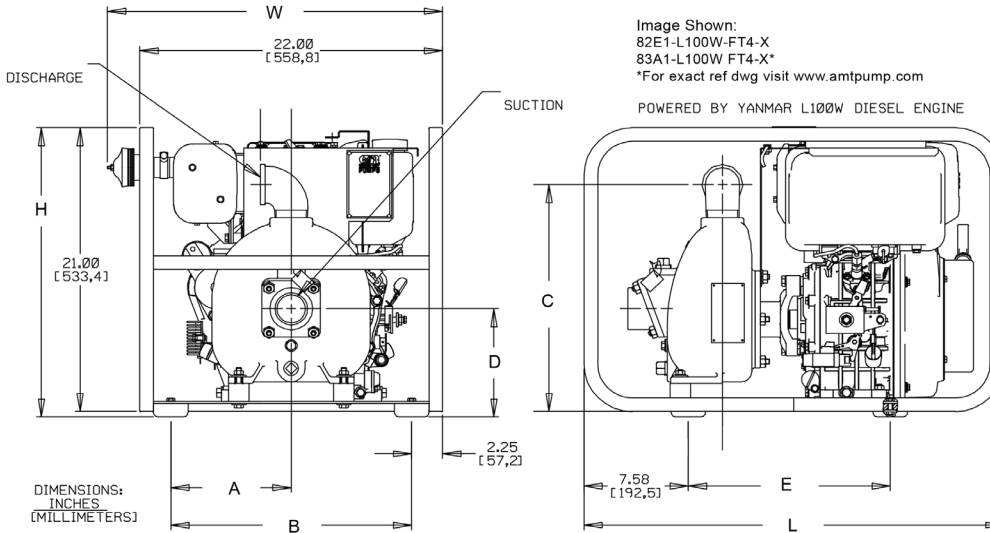
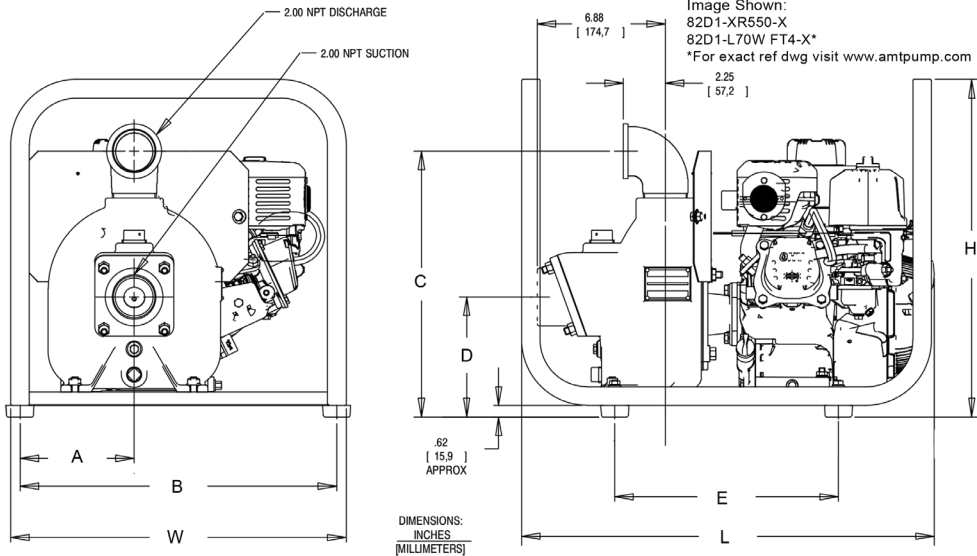
Pump Dimensional & Specification Data

Model	Curve	Driver	Port - NPT (SUC x DIS)	Seal Type & Elastomer/Faces	Mounting	Run Time (Hours)	Tank Size (Gal/L)	Max Solids	Ship Wt. (Lbs.)
82D1-XR550-X	A	Briggs & Stratton XR550	2" x 2"	Viton®/Silicon Carbide	Roll Cage	1.9	0.5/1.9	.62" (16mm)	100
82D1-L70W FT4-X	B	Yanmar L70W Diesel	2" x 2"	Viton®/Silicon Carbide	Roll Cage	1.4	0.87/3.3	.62" (16mm)	155
82E1-L100W FT4-X	C	Yanmar L100W Diesel	2" x 2"	Viton®/Carbon/Ceramic	Roll Cage	2.2	1.44/5.5	.75" (19mm)	230
83A1-L100W FT4-X	D	Yanmar L100W Diesel	3" x 3"	Viton®/Carbon/Ceramic	Roll Cage	2.2	1.44/5.5	.75" (19mm)	240

Construction: Cast Aluminum

Pump Dimensional & Specification Data

- Models are available in 2" and 3" discharge sizes and are capable of delivering up to 395 GPM and heads up to 140'.
- Explosion-proof and safe to use with volatile liquids, such as fuel and other petroleum products in a non-flammable atmosphere.
- Applicable for petroleum, industrial, construction, and agricultural needs.
- Self-Priming up to 25' (for additional lift condition performance data please visit www.amtpump.com for more info).
- Shield-A-Spark pumps by GR feature a shielded ignition wire, spark and splash shielded engine, muffler, and fuel cap.
- Gasoline Model 82D1-XR550-X is a UL Listed Product in the United States and also includes a Shielded Spark Plug.
- Standard Pump Performance is based on 70°F (21°C) clear water (corrected to 0.8 Specific Gravity) at sea level with minimum suction lift.
- Diesel-driven products are configured w/ EPA Tier compliant engines.
- Wheel Kit Options Available for all Models Listed, please see pricebook.



Model	SUC*	DIS*	A	B	C	D	E	L	W	H
82D1-XR550-X	2	2	6.1 [15.6]	17.0 [43.2]	14.3 [36.3]	6.4 [16.3]	12.0 [56.2]	22.2 [56.3]	18.0 [45.7]	18.1 [46.0]
82D1-L70W FT4-X	2	2	11.3 [28.6]	20.0 [50.8]	17.0 [43.3]	8.0 [20.3]	13.5 [34.3]	28.0 [71.1]	22.1 [56.1]	22.8 [57.9]
82E1-L100W FT4-X	2	2	8.75 [22.2]	17.5 [44.5]	16.8 [42.7]	8.0 [20.3]	14.7 [37.3]	30.5 [77.5]	24.4 [61.9]	21.4 [54.4]
83A1-L100W FT4-X	3	3	8.75 [22.2]	17.5 [44.5]	18.4 [46.7]	8.0 [20.3]	14.7 [37.3]	30.5 [77.5]	24.4 [61.9]	21.4 [54.4]

(*) Standard NPT (Female) pipe thread.

NOTE: Dimensions are in inches (centimeters) and have a tolerance of ± 1/8".



Manufacturer of AMT & IPT Pumps

400 Spring Street • Royersford, PA 19468 USA

www.amtpump.com • 888-amt-pump (268-7867)

The Gorman-Rupp Company reserves the right to discontinue any model or change specifications at any time without incurring any obligation.
©2026 AMT Pump Company. All rights reserved.



GORMAN-RUPP®

0426