

## 2" Self-Priming Cast Iron Gasoline & Diesel Driven Solids Handling Pumps

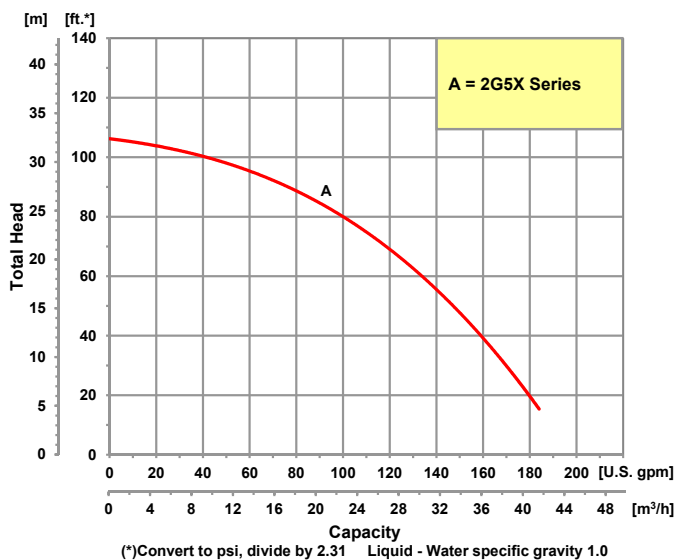


Model 2G5XQCR

- **Heavy Duty Cast Iron Construction**
- **EPDM/EPR Mechanical Seal, O-Rings and Gaskets**
- **2" NPT Port Sizes**
- **Self-Priming up to 20 Ft.**
- **Semi-Open, Clog Resistant Impellers**
- **Solids Handling and Dirty Water Design**
- **Maximum Solids Handling 1/2"**
- **Built-in EPDM/EPR Check Valve**
- **Engine Options: Honda Gasoline or Hatz Diesel**
- **Heavy Duty Steel Roll Frame Included**
- **Optional Wheel Kit Available**

The IPT line of Cast Iron Engine Driven Solids Handling pumps offers an upgraded debris handling capability in wear resistant cast iron construction. Applications include: high volume liquid transfer, agriculture/liquid fertilizer, irrigation, dirty water commercial draining and construction. Pumps are designed to handle liquids with solids content or dissolved solids and debris. All models feature durable all cast iron construction and clog-resistant impeller to ensure a long life for the complete pump. Dual volute design reduces radial load on engines. Simple four bolt design for easy cleanout, tool included. EPDM/EPR seal and gaskets for use with many anti-freeze, alcohols, ozone, freon, etc. **Check your specific chemical for compatibility.**

Performance of Engine Driven Pumps



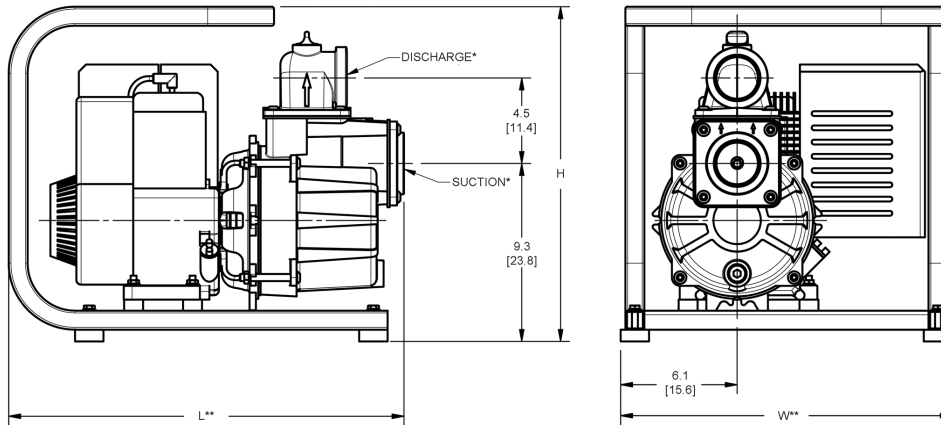
## Pump Dimensional & Specification Data

Model	Curve	Port	Driver	Seal	Run Time (Hours)	Tank Size (Gal./Ltr.)	Ship Wt. (Lbs.)
<b>2G7XZCR</b>	A	2" NPT	Hatz Diesel 1B30	EPDM/EPR	2.7	0.79/3.0	115
<b>2G5XQCR</b>	A	2" NPT	Honda GC160 OHV	EPDM/EPR	1.5	0.47/1.7	90

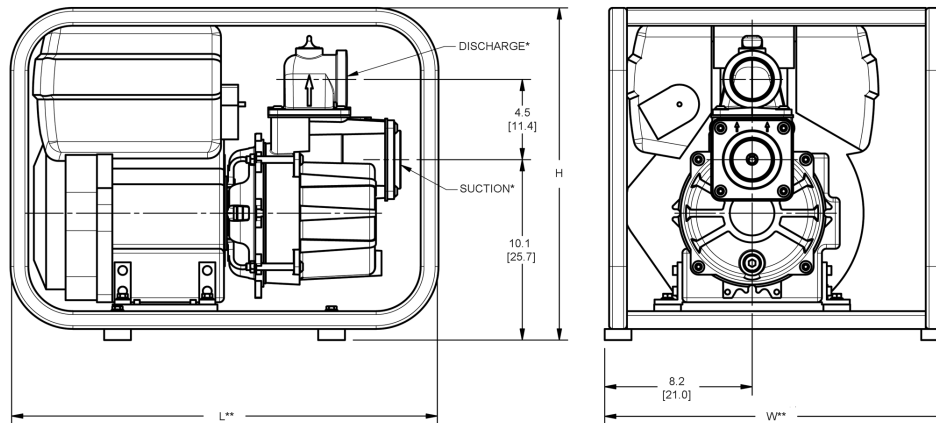
Construction: Cast Iron

Maximum Solids Handling Capacity: 1/2" Diameter

### 2" Gasoline Solids Handling Pumps



### 2" Diesel Solids Handling Pumps



## Standard Features

- Simple Four Bolt Design for Easy Cleanout, Tool Included
- EPDM/EPR Mechanical Seals, O-Rings and Gaskets
- Discharge Ports Rotate in 90° Increments
- Heavy Duty Cast Iron Construction Ensures Durability for Severe Service Conditions
- O-Ring Casing Seal for Ease of Service and Cleaning
- Maximum Working Pressure 75 PSI
- Maximum Temperature 200° F
- Maximum Flow 182 GPM
- Maximum Head 106 Ft.
- Dual Volute Design for Hydraulic Balance
- Self-Primes to 10 Feet in 1 Minute with Maximum Suction Lift of 20 Feet
- Heavy Duty Steel Roll Frame for Portability

### Optional Wheel Kit For Roll Frame Pumps

Model	HP Class ♦	SUC*	DIS*	L**	W**	H
<b>2G7XZCR</b>	5 HP	2	2	31.0 [78.7]	22.5 [57.1]	23.6 [59.9]
<b>2G5XQCR</b>	5 HP	2	2	20.8 [52.8]	17.5 [44.5]	17.6 [44.8]

Model	Features	Ship Wt. (Lbs.)
<b>C402-90</b>	Includes 10" semi-pneumatic tires on steel wheels with clamps and steel handle for universal mounting to frame.	25

(♦) HP Class represents market category and is not intended to define actual horsepower

(\*) Standard NPT Pipe Thread

(\*\*) This dimension may vary due to engine manufacturer's specifications.

NOTE: Dimensions are in inches [centimeters] and have a tolerance of ±1/8".